

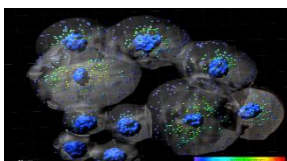
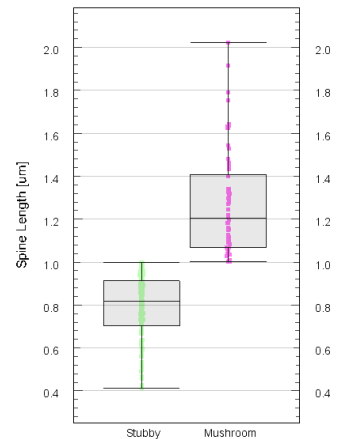
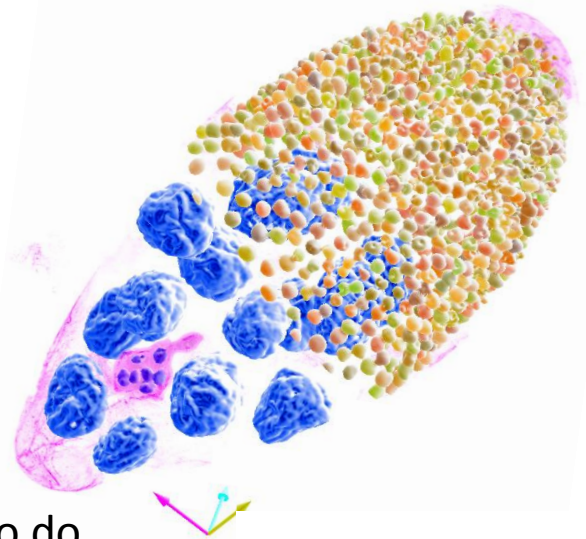
IMARIS: extract more from your images

Come discover **IMARIS 9.0**, the first to do surface models in HUGE datasets:

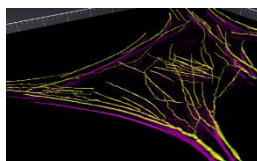
- Create stunning images and movies
- Modelling as points, surfaces, filaments
- Filament Analysis (neurons, capillaries)
- Use both cytosolic and membrane stains
- Time-lapse with lineage trees
- Hypothesis testing, comparing datasets
- Integration with Fiji, Matlab, Python...
- Advanced compartmentalization analysis.
- Demo of Imaris 9.0: *Segmenting* and viewing data from a 72GB dataset...

Welcome to about an hour's seminar, starting **9:30am 20/9 2017** at the Institute for Laboratory Animal Science, Pauwelstr. 30. You can register by email either with erik@bitplane.com or mvogt@ukaachen.de. The seminar room is in a restricted access area so pre-registration is mandatory.

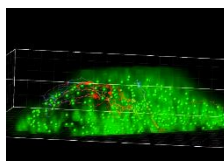
A **workshop** will also be organised in the afternoon at the IZKF Aachen Core Facility "Two-Photon Imaging": more info upon registration.



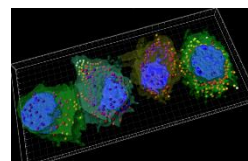
Points & Surfaces



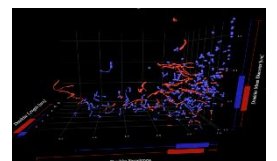
Filaments



Tracking



Compartments



Exploring data